

# Robert D. Wilson Elementary School

## September 2011

### Welcome Back

The summer months provide the staff at Robert D. Wilson an opportunity to review student performance and plan for the new year. Each new year brings many opportunities for advancement of the student body. This year is no exception. In fact, we are all very excited about the possibilities that await us in the classroom.

The students did exceptionally well on the Terra Nova and Pennsylvania System of School Assessment (PSSA).

Congratulations to the students, parents and teachers who worked so hard to attain these high marks. A summary of the number of students tested and the results are provided below. Actual numbers, not percentages, are used. All students, at the specific grades, are tested at R. D. Wilson.

Our continued improvement in performance on the PSSA and attendance rate means that we have met the standards set for Adequate Yearly Progress. We cannot rest at this time as the

benchmark for meeting Adequate Yearly Progress for 2012 is increasing in Reading from 72% proficient to 81% proficient and in Mathematics from 67% proficient to 78% proficient.



Grade Level	Proficient	Not Proficient
Third: 59 Tested 60 Tested	50 Reading 55 Math	9 Reading 5 Math
Fourth: 63 Tested 64 Tested	49 Reading 57 Math	14 Reading 7 Math
Fifth: 64 Tested 65 Tested	51 Reading 58 Math	13 Reading 7 Math



### Health and Wellness Policy

Health and wellness is much more than a policy at Robert D. Wilson. The student body with support from representatives of every school division is addressing: nutrition, health education, physical education and student physical activity.

At RDW we continue to offer a recess period each school day and two physical education classes per six day period. Mrs. Butler with support from school personnel and the PTA is instituting a walking program with fifth grade stu-

dents. Students in good academic standing will have an opportunity to participate in this club designed to promote general health and physical activity through walking. If successful, the program will be offered to additional grade level students.

Nutrition education is incorporated into health and science lessons. This past spring pre-kindergarten students with assistance from Mrs. Firmstone planted a vegetable garden. With encouragement and the "green

thumb" of Mrs. Podunajec and Mr. Brundage the garden has produced items for the students to enjoy.

Classroom parties are well stocked with attractive and tasty vegetable and fruit trays. These items are a huge hit with the children. We will continue to encourage healthy substitutions for our classroom parties. Your help and support of this initiative is greatly appreciated.

# Robert D. Wilson Elementary School



The building and grounds are looking great for the start of school. The children will enjoy them at recess. We hope that you can enjoy them during the evening for a walk or practice.

Kindergarten through fifth grade students will participate in a brief bus safety program during September. Please help us make the ride to and from school pleasurable and safe by reviewing and supporting the following bus rules. Parent supervision of children prior to pick up and during drop off time is an integral part of bus safety.

- \* Observe classroom conduct.
- \* Be courteous, use no profane language.
- \* Do not eat or drink on the bus.

## Instructional Time

**Start Time: 8:00**

**Dismissal Time: 3:00**

Arriving late or leaving early is a disadvantage to you and your child. Please make every effort to arrive on time and leave at the true end of day.

Doctor appointments scheduled for before or after school hours are ideal. Missed instruction or work may result in homework or

recess work. We understand, that on occasion, available appointment times may conflict with school hours.

If you are planning to pick up your child from school, please send a note. It is very helpful in alleviating end of the day stress for the students anticipating a pick-up. Sign-out for end of day student pick-up begins at 2:45 PM.

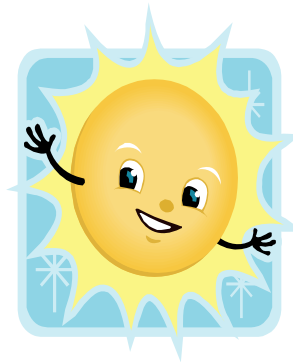
## Transportation Safety

- \* Keep the bus clean.
- \* Cooperate with the bus driver.
- \* Do not smoke.
- \* Do not damage bus or equipment.
- \* Stay in your seat.
- \* Keep head, hands and feet inside bus.
- \* Do not push, shove or fight.
- \* Do not tamper with bus equipment.
- \* Do not bring pets on the bus.
- \* Do not bring flammable material on the bus.
- The bus driver is authorized to assign seats.

If all of us do our part, the ride to and from school will be safe and an enjoyable time to visit with friends and neighbors.



## Emergency Cards



It is essential that you fill out your emergency card and return it to your child's teacher as soon as possible.

It is equally important that you update the card should you move or change your place of work.

## *Home of the Wildcats*

*The Mission of the Western Wayne School District is to educate and prepare each student in alliance with family and community, to be a confident, life-long learner, to strive for personal excellence, and to be a responsible citizen of a global society.*



---

## IMPORTANT DATES

### **OPEN HOUSE**

September 20, 2011

6:00-8:00

### **School Pictures**

September 21, 2011

### **DIBELS**

Dynamic Indicators of Basic Early Literacy Skills (Kindergarten-Fifth Grades)

September 14 & 15, 2011



**4Sight Reading & WWSD Mathematics** (Reading in grades 3-5 and Mathematics in grades 2-5)

September 26 & 27, 2011

**Get Ready To Read and KLST 2** (Prekindergarten and New Kindergarten Students)

Week of September 26, 2011